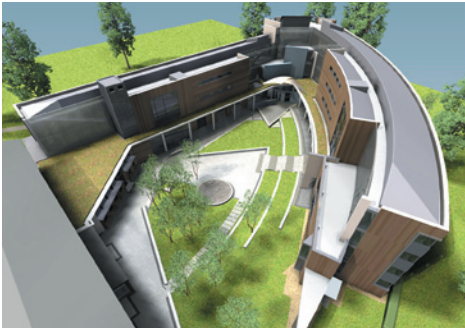


Wymondham College
Images by LSI Architects

Aerial View



View of courtyard towards Lincoln House



View of westward pointing prow



NEWS RELEASE

For immediate release
15th January 2007

WYMONDHAM COLLEGE - MAJOR EXPANSION SCHEME COMMENCES

Wymondham College has announced that a £6.75 million project to build new, bespoke boarding facilities at the campus in Norfolk will commence this spring. Wymondham College is both the UK's largest State Boarding School and one of the few State Boarding schools in the country, classified by the DfES as a 'Successful and Popular' School. The College secured funding of £9.844 million from the DfES under the Government's 'Successful and Popular Schools' Programme of which the £6.75 million for the Boarding Block represents the lion's share. The balance is allocated to various works across campus and to an 11 classroom expansion project.

The new Sixth Form boarding facilities, designed by London and Norwich based LSI Architects, will provide a 'wishbone' style extension to an existing boarding block, with 115 new ensuite single study bedrooms and support accommodation, library, IT rooms, new communal activity spaces and an expansion of the existing dining facilities. The new building will link to the existing Lincoln House building to provide a single base for all Year 12 and Year 13 pupils.

The design of the new Sixth Form complex at the College was won by LSI Architects in a limited competition in 2005 and the Governors have awarded the contract to local contractors, RG Carter.

The main concept behind the design for the new complex is to provide all residents with a view outwards over the Norfolk countryside, from rooms organised in three and four-storey wings arranged around a large landscaped courtyard. Access to the new wings is via a covered walkway surrounding the new courtyard. The wings meet in a dramatic westward pointing 'prow', which will be clearly visible on entry into the campus.

Phil Cowen of Cowen Consulting, the Project Manager of the scheme said: "It has been a rewarding process for all on the Project Team working alongside the College to realise their aspirations for the new Boarding Block for which funding was secured from the DfES through the Successful and Popular Schools programme. The project is now entering the exciting phase with the appointment of RG Carter, a local contractor with whom many of the team have worked in the past."

LSI Project Associate, Jeremy O'Rourke, said: "The new building makes a bold, contemporary architectural statement, with large areas of white render, timber cladding and glazing. The idea is that the new building provides a springboard between the world of school, and the wider world beyond. To this end the design concept allows each new room to enjoy distant views, whilst making a diverse range of activities possible within the landscaped courtyard at the heart of the scheme. Here there will be a stage for performance, places for outdoor lessons and areas for the display of students' art."



Mr O'Rourke concluded: "The sustainability agenda has been a key determinant of the design: the highly insulated building has exposed concrete surfaces internally to provide cooling in the summer, will have hot water produced by solar panels, and will be largely ventilated by natural means."

Acting College Principal, Dominic Findlay, commented "This will raise the profile of our 16+ provision and hopefully attract even greater student numbers applying to our Sixth Form."

The Project Team

Client: Wymondham College

Architects: LSI Architects

Project Manager: Cowen Consulting

Services Engineer: Integrated Building Services

Contractors: RG Carter

Quantity Surveyor: Davis Langdon

Structural Engineer: Whitby Bird

Landscape Architect: Sheils Flynn

Planning Supervisor: D Mulley Associates

Ends

Notes to the editor

1. For high quality images, further information or interviews with the College, LSI Architects or other Project Team members, please contact: Carri Crook, Carisma Communications on 01842 811313 or email info@carismacommunications.co.uk.
2. LSI Architects is amongst the most highly regarded design practices in Norfolk and the Eastern Region. It is known generally within the Industry for professionalism and design quality and sustainable design, and by its clients for quality of service and creative cost effective solutions. LSI Architects main clients are corporate and public bodies with major sectors being: the workplace, retail, education, health and master planning. LSI Architects is a practice of over 50 personnel, operating throughout the UK from its bases in Norwich and London. LSI Architects website: www.LSIarchitects.co.uk
3. All images are subject to the Copyright and Patents Act 1988 and must be accredited to LSI Architects.
4. Wymondham College is a Foundation boarding and day school with Technology College status. The College has over 1000 students including 387 in the Sixth Form. It is situated on an 82 acre site in rural South Norfolk, some 20 kms from Norwich. The College is a community of excellence, a powerhouse of academic achievement and a support for personal pupil development. The College's GCSE and A Level results consistently rank the College alongside the top achieving schools in the country. It is a Specialist College with a main focus on Maths and Science, DT and IT and more recently Modern Foreign Languages, although all areas of the curriculum are effectively covered. Being a Foundation school it can offer a boarding education at an extremely affordable price for such a successful school. Boarding fees are about £6,705.00 per year and cover the accommodation costs and make the College an increasingly popular secondary education option. The College presently offers students a selection of more than twenty five A Level subjects, as well as three vocational advanced courses. The 'Independent' rated the College in the top 3 comprehensive schools in the country. Wymondham College has six collegiate halls of residence and there are some 400 students in the Sixth Form, about half of whom are boarders.